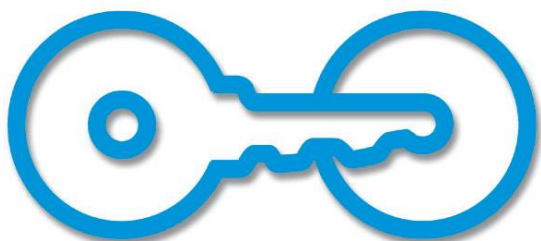




Bike Hook Solo



The Bike Hook Solo provides a simple, space-efficient way to store and lock up your bike. The rack includes all necessary hardware for mounting to the wall and an integrated 4 foot security cable to help keep your bike safe.



American Bicycle Security Company

P.O. Box 7359

Ventura, CA 93006

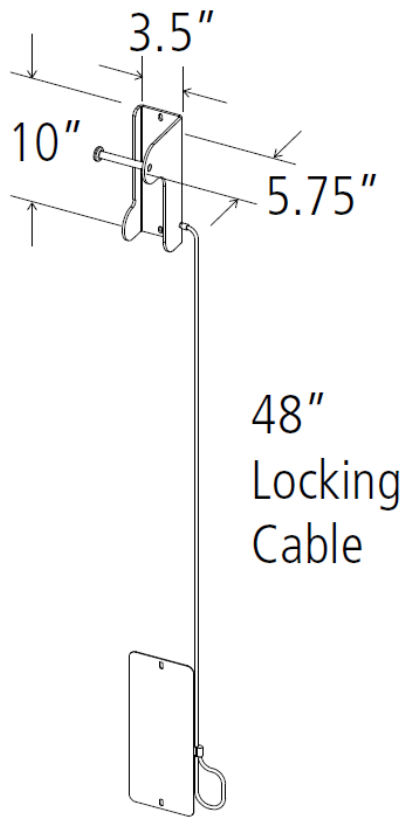
Ph: (800) 245-3723 or (805) 933-3688

Fax: (805) 933-1865

www.ameribike.com

Email: turtle@ameribike.com

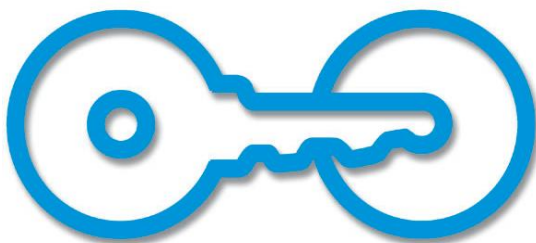
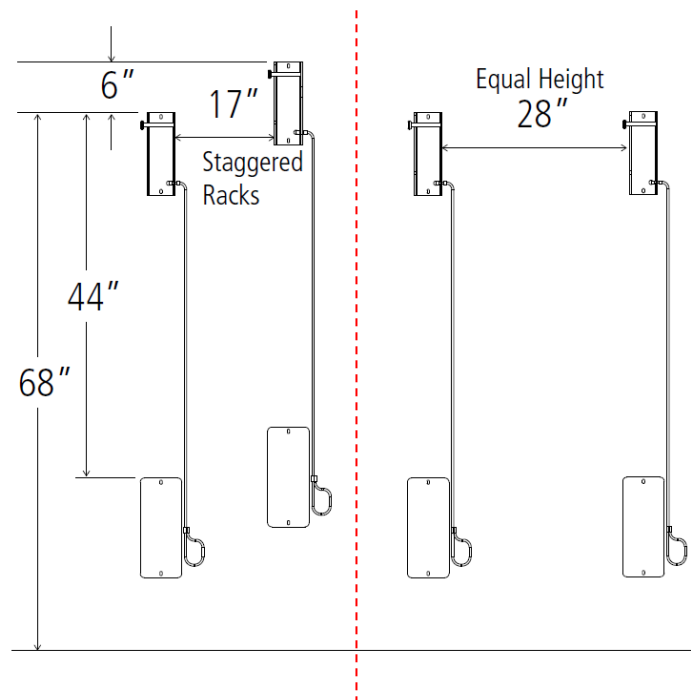
Bike Hook Solo



Example of rack in use

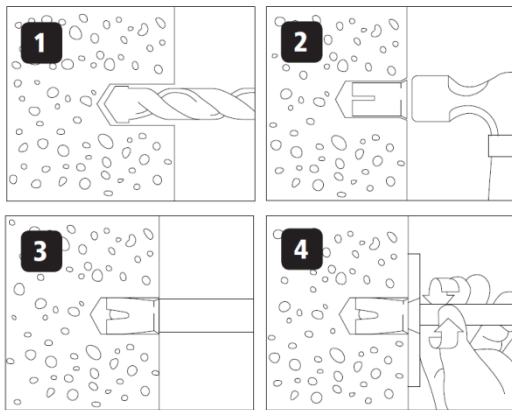
Height Requirement: 84"

Product	Bike Hook Solo
Capacity	1 Bike
Materials	Main Body: 3/16" steel plate Security Cable: 3/16" vinyl coated cable Optional Wall Guard: 14g aluminum plate
Finishes	A black powder coat finish is our standard option. A galvanized, stainless and thermoplastic coating are also available as alternate options.
Installation Methods	Concrete wall mounted use 3/8" drop-in anchors with tamperproof screws. Wood and drywall mounted use 1/4" lag screws. Concrete block uses drive-in anchors.
Space Use & Setbacks	Ceiling height: 78" is the minimum ceiling height. The top of the rack should have a minimum height of 68" Distance Between Racks: 28" is the minimum distance between level racks. 17" is the minimum distance between racks with staggered heights.



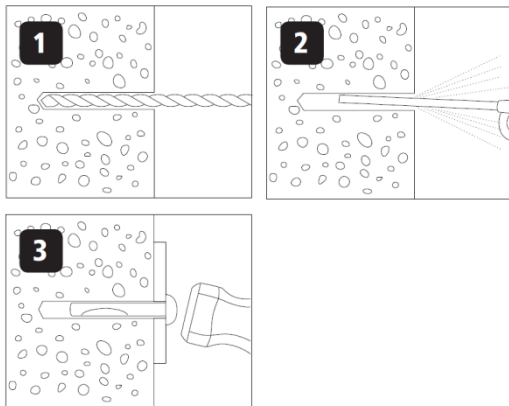
American Bicycle Security Company

P.O. Box 7359
Ventura, CA 93006
Ph: (800) 245-3723 or (805) 933-3688
Fax: (805) 933-1865
www.ameribike.com
Email: turtle@ameribike.com



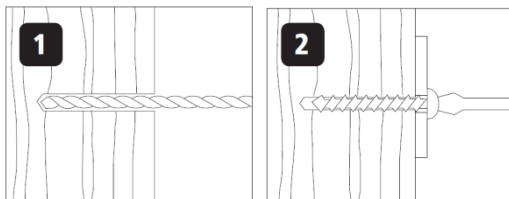
Concrete Wall Installation

1. Drill a hole in the base material using a 3/8" diameter masonry bit. Drill the hole to 1" depth. Blow the hole clean using compressed air.
2. Insert Drop-In anchor into hole. Tap with hammer until flush against surface.
3. Using the Drop-In setting tool, drive expander plug towards the bottom of the anchor until shoulder of setting tool makes contact with the top of the anchor.
4. Place rack and screw anchor into wall.



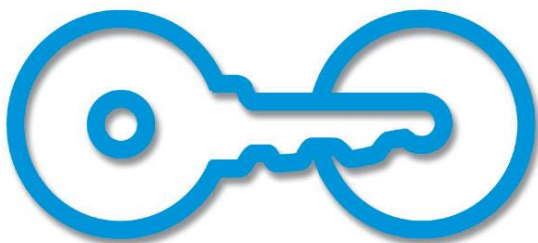
Concrete Block Installation

1. Drill a hole in the base material using a 1/4" diameter masonry bit.
2. Blow the hole clean using compressed air.
3. Place rack and hammer anchor into wall.



Wood Stud Installation

1. Drill small pilot holes into wood studs. Drywall alone is not sufficiently strong to support loaded rack.
2. Place rack and use provided wood screws to secure to wall.



American Bicycle Security Company

P.O. Box 7359

Ventura, CA 93006

Ph: (800) 245-3723 or (805) 933-3688

Fax: (805) 933-1865

www.ameribike.com

Email: turtle@ameribike.com